



### ***If you are looking for:***

- A community of library workers who share common goals
- Your place to be involved in the future of your profession
- And connections with the best in continuing education, in person and online

### ***Choose Joint Membership in ALA and NYLA***

Act now and save \$30 on your Joint Membership:

*Your discounted \$54 dues (a \$85.00 value) includes full membership in ALA, LSSIRT and NYLA.*

Go to [www.ala.org/membership](http://www.ala.org/membership) and join today (click on "Joint Membership Offer"). Or call ALA at 1-800-545-2433 ext 5 and let us know you want to be a Joint Support Staff Member in New York.

### **Why Joint Membership?**

ALA and NYLA work for our members, advocating for issues that concern you, like library funding, salaries, freedom of access to information, and the status of library workers. We offer continuing education opportunities and ongoing training to help you improve the skills you use every day.

Membership connects you with the larger library community and opens doors for personal and professional enrichment. Library Assistants and other support staff have access to the best network of colleagues from around the state and across the country who do similar work and have similar interests.

You are invited to take part, to connect, and to grow in a rewarding, encouraging environment with thousands of other library staff who are members of your professional associations.

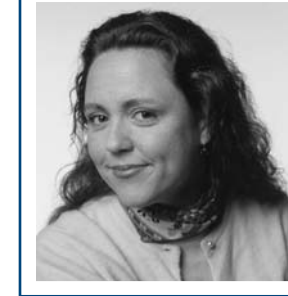
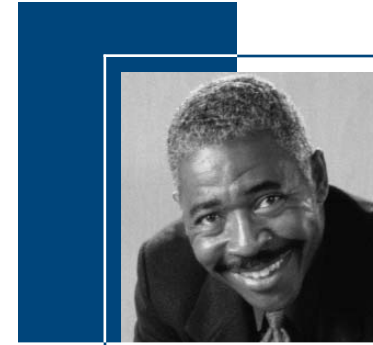
### **Roundtable and Section for Library Assistants and Support Staff**

Get your colleagues to join NYLA and petition the NYLA Council to establish a Roundtable for Library Assistants and Support Staff (only 25 members needed) or a Library Assistant/Support Staff Section (300 members needed).

Roundtables have their own officers and bylaws, receive portion of membership dues and are entitled to program slots at NYLA's Annual Conference.

Sections also have their own officers and bylaws as well as have a seat on the NYLA Council and receive 25% of individual membership dues. In addition, Sections are entitled to a specified number of program slots at NYLA's Annual Conference and pre-conference CE's.

So encourage your colleagues to join NYLA and ALA together with this special membership offer!



## **Library Assistants and Support Staff Special Membership Offer**

**Join ALA and NYLA  
For one low price of  
\$54/year**

**and help shape the future of  
libraries and the library profession**



**NEW YORK LIBRARY ASSOCIATION**  
*The Voice of the Library Community*



### About NYLA

The New York Library Association is the Voice of the Library Community in New York. NYLA, established by Melville Dewey in 1890, is the oldest state library association in the country and represents school, academic, special and public libraries and library staff from around the state.

NYLA is the only organization dedicated to advocating on behalf of libraries and library workers in Albany. NYLA advocates for increased funding for libraries and better working conditions for library staff. Library assistants and other support staff are all welcome to join NYLA and add their voice to their colleagues in helping shape the future of libraries and the library profession in New York.

NYLA offers a variety of services and programs to meet our members needs ranging from professional development opportunities at our Annual Conference and Regional Institutes to member discounts on a range of services and products for your personal or professional needs.

In addition, members receive our regular quarterly newsletter, the NYLA Bulletin, as well email updates via our Online Membership Center on legislative issues, professional development programs, and awards/scholarship announcements.

Visit [www.nyla.org](http://www.nyla.org) to learn more about the New York Library Association.

### About ALA

The American Library Association (ALA) invites you to participate in our outreach, advocacy, skills training, and networking opportunities.

Our Library Support Staff Interests Round Table (LSSIRT) is your forum to connect with other members who share similar interests. Public, academic, school and special libraries are all represented in LSSIRT. Participate in committee work and help shape the evolving roles that support staff play in library work.

Your joint membership includes automatic, complimentary membership in LSSIRT as well as 11 yearly issues of American Libraries and the quarterly LSSIRT Newsletter. Other member benefits, like discounts on conference and CE events, our members-only 10% discount on ALA Editions and Graphics products, and access to medical, dental, and life insurance, are detailed at [www.ala.org](http://www.ala.org).

ALA is a dynamic place. Build your skills and your resume by being an active, involved member of your professional association.

Visit [www.ala.org](http://www.ala.org) for more information.

## Application for Joint Membership

Prefix \_\_\_\_\_ First Name \_\_\_\_\_ MI \_\_\_\_\_ Last Name \_\_\_\_\_

Job Title or Current Position \_\_\_\_\_

Place of Employment \_\_\_\_\_

### Work Address

Street \_\_\_\_\_

City \_\_\_\_\_ State \_\_\_\_\_ Zip \_\_\_\_\_

Work Phone \_\_\_\_\_ E-mail \_\_\_\_\_

### Home Address

Street \_\_\_\_\_

City \_\_\_\_\_ State \_\_\_\_\_ Zip \_\_\_\_\_

Home Phone \_\_\_\_\_ E-mail \_\_\_\_\_

Preferred Mailing Address:  Work  Home

### Payment Method (\$54 Joint Membership LS-NY)

My check is enclosed for \$54, payable to ALA

Charge \$54 to my  VISA  MasterCard  AMEX

Card Number \_\_\_\_\_

Expiration Date \_\_\_\_\_

Name on Card \_\_\_\_\_

Signature \_\_\_\_\_

### Please Detach and Return with Payment to:

Chapter Relations Office  
ALA  
40 E. Huron St.  
Chicago, IL 60611

(NY06)